

LEGEND:

Magnetic Analytical Signal
nT/m

SCALE:

Scale 1:750
metres
OSGB 1936 / British National Grid

NOTES:

1. Surface coordinates relative to OSGB (1936)

CLIENT: ENI

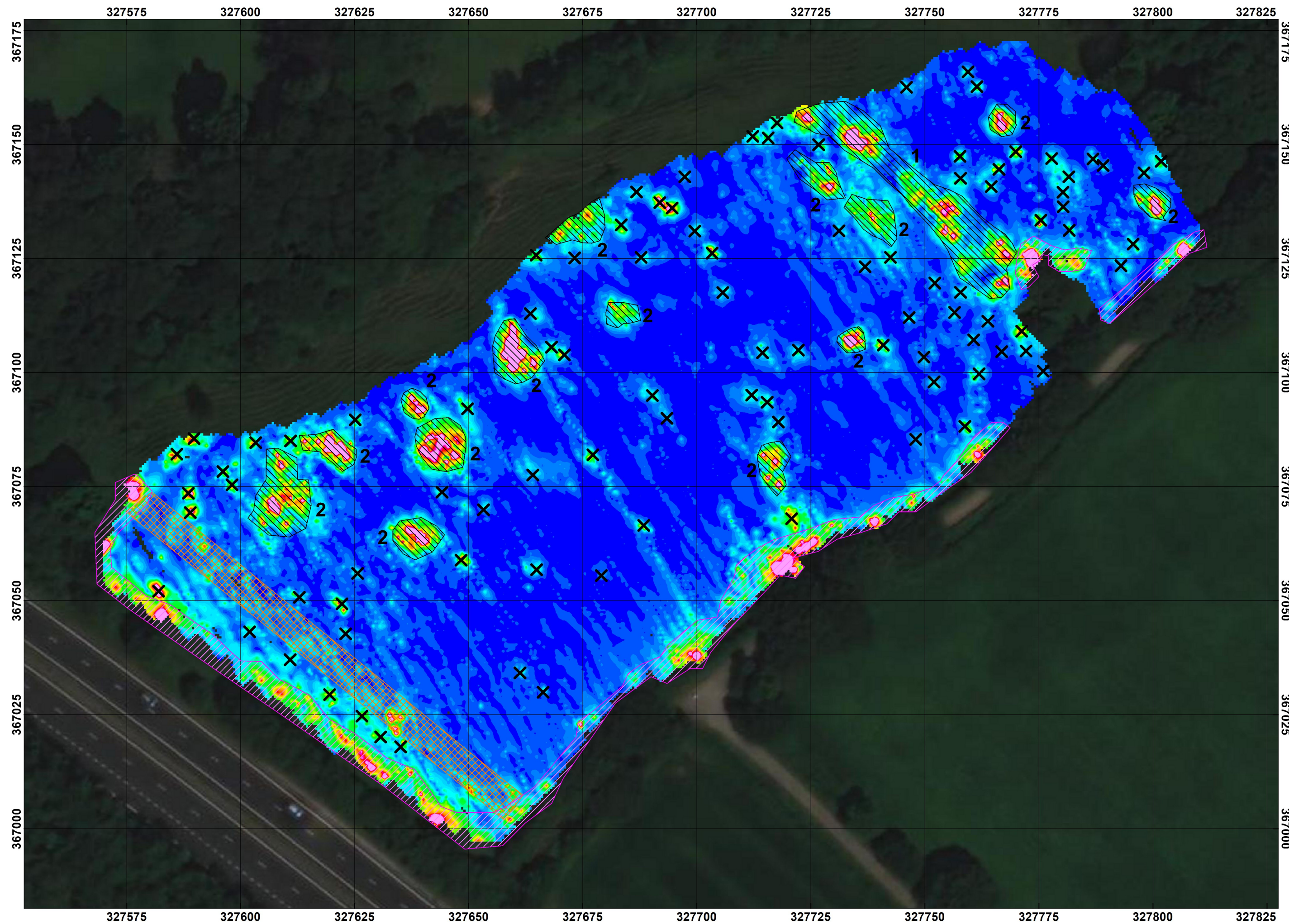
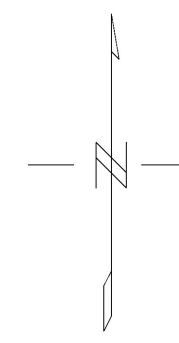
PROJECT: LBA CCS Transport and Storage Project
Ground Investigations

TITLE: Magnetic Analytical Signal

PROJECT NO.:	190094	DRAWING NO.:	08
ISSUE REFERENCE:	01	DATE:	22/02/2022
INTERP. BY:	EC	DATE:	22/02/2022
CHECKED BY:	DK	DATE:	22/02/2022
		APPROVED BY:	DK
		DATE:	22/02/2022

DRAWING SCALE: 1:750
PLOTTED DRAWING SIZE: A2 (594 x 420 mm)

FUGRO GEOSERVICES LIMITED
Fugro House, Hithercroft Road
Wallingford, Oxfordshire. OX10 9RB
Tel: +44 (0)870 4021 400



LEGEND:

- Anomalies associated with power lines
- Anomalies associated with fences
- Unknown Anomaly
- Point Anomaly - Likely near surface debris

Magnetic Analytical Signal
nT/m

SCALE:

Scale 1:750

metres

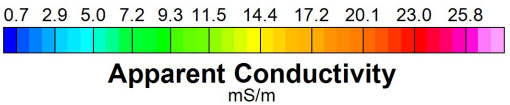
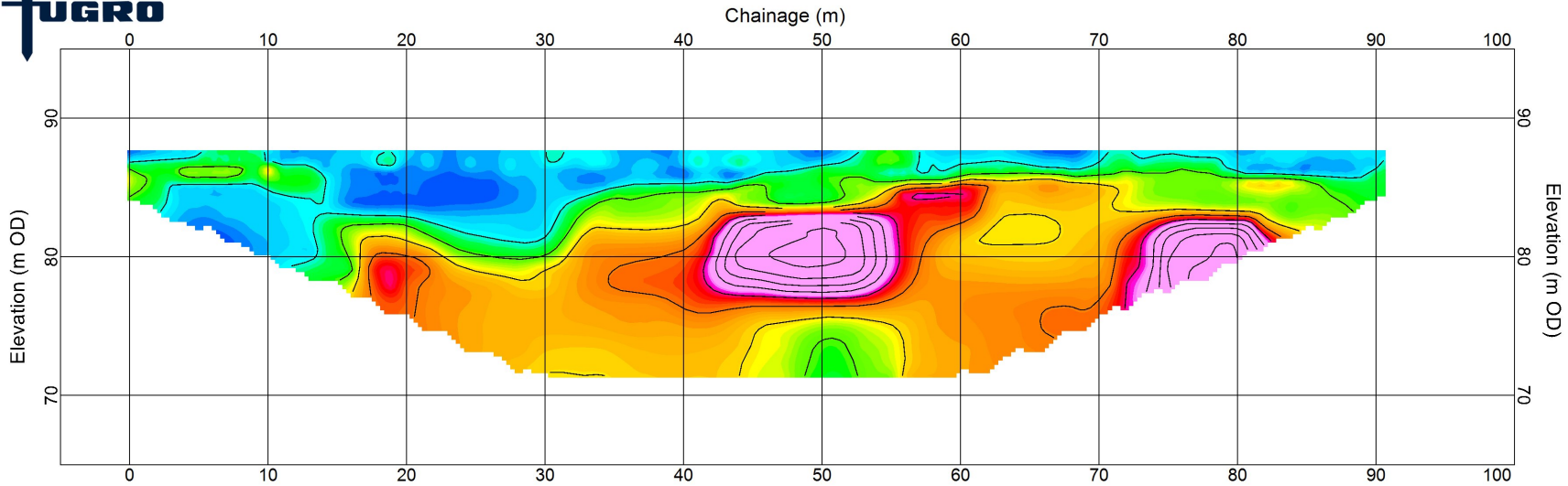
OSGB 1936 / British National Grid

NOTES:

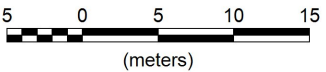
1. Surface coordinates relative to OSGB (1936)

CLIENT:			
ENI			
PROJECT:			
LBA CCS Transport and Storage Project Ground Investigations			
TITLE:			
Magnetic Analytical Signal Anomaly Interpretation			
PROJECT NO.:	190094	DRAWING NO.:	09
ISSUE REFERENCE:	01	DATE:	22/02/2022
INTERP. BY:	EC	DATE:	22/02/2022
DRAWN BY:	EC	DATE:	22/02/2022
CHECKED BY:	DK	DATE:	22/02/2022
APPROVED BY:	DK	DATE:	22/02/2022
DRAWING SCALE:		1:750	
PLOTTED DRAWING SIZE:		A2 (594 x 420 mm)	
<small>FUGRO GEOSERVICES LIMITED Fugro House, Hithercroft Road Wallingford, Oxfordshire, OX10 9RB Tel: +44 (0)870 4021 400</small>			

1. Large linear cluster of anomalies - may be related to adit
 2. Likely near surface anomalies - could be related to mining activities



Apparent Conductivity
mS/m



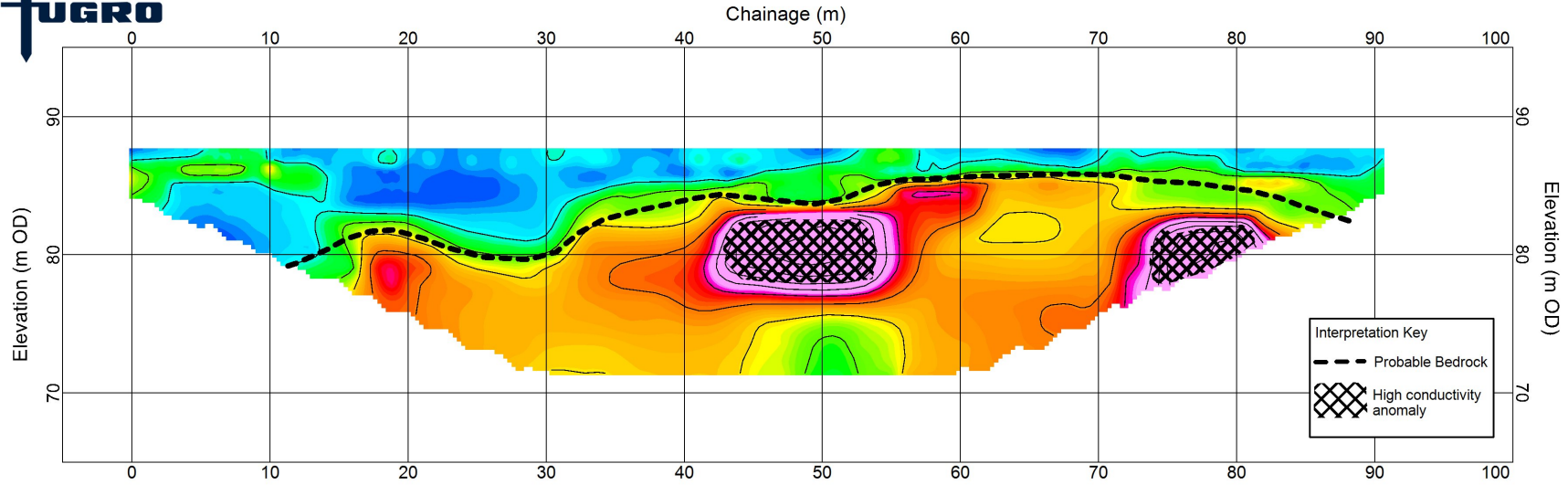
Northop Hall Mine Workings
Conductivity Section

LBA CCS Transport and Storage Project Ground Investigation

Eni UK Limited

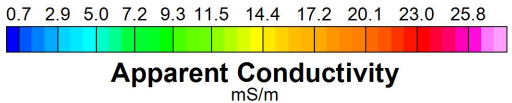
Line Coordinates		
Orient (N-S)	Easting	Northing
Start (0 m)	327814.7	367138.4
End (90.8 m)	327748.2	367076.4

Project No.:	190094	Drawing No.:	10
Issue Ref.:	01	Date:	22/02/2022
Inerp. By:	EC	Drawn By:	EC
Check By:	DK	Approved By:	DK

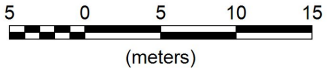


Interpretation Key

- Probable Bedrock
- ▣ High conductivity anomaly



Apparent Conductivity
mS/m



Northop Hall Mine Workings
Interpreted Conductivity Section

LBA CCS Transport and Storage Project Ground Investigation

Eni UK Limited

Line Coordinates

Orient (N-S)	Easting	Northing
Start (0 m)	327814.7	367138.4
End (90.8 m)	327748.2	367076.4

Project No.:	190094	Drawing No.:	11
Issue Ref.:	01	Date:	22/02/2022
Inerp. By.:	EC	Drawn By.:	EC
Check By.:	DK	Approved By.:	DK